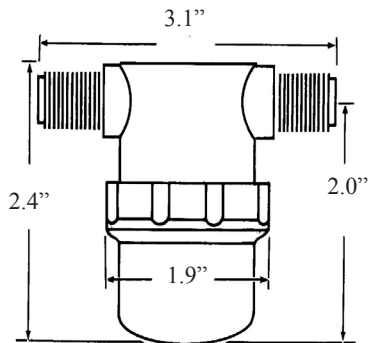
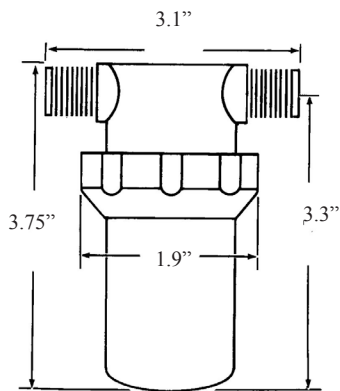


LOW PROFILE



FILTER AREA - 3.95 SQ IN

**MINI STRAINER



FILTER AREA - 7.71 SQ IN

POLYPRO (L.P. Standard Assy) ListEA

1. POLY TOP (RVM) **\$ 9.20**
2. EPDM OR BUNA GASKET (RVM44GB OR E)
3. 20,40, OR 80 MESH SCREEN (RVM44__)
4. POLY OR CLEAR BOWL (RVM44BP OR RVM44BC)

OPTIONS

- | | |
|---------------------------|----------|
| 1. FEMALE TOPS (RVLFF) | add 1.05 |
| 1. BARB TOP (RVB) | add .60 |
| 2. VITON GASKET (RVM44GV) | add 1.15 |

**MINI STRAINER OPTION(LONG BOWL & SCREEN)

- | | |
|---|----------|
| 20,40,80 mesh screen w/poly bowl | add 3.15 |
| 20,40,80 mesh screen w/clear nylon bowl | add 6.45 |

NYLON (L.P. Standard Assy) ListEA

1. NYLON TOP (RVM) **\$ 9.20**
2. EPDM OR BUNA GASKET (RVM44GB OR E)
3. 20,40, OR 80 MESH SCREEN (RVM44__)
4. CLEAR BOWL (RVM44BC)

OPTIONS

- | | |
|---------------------------|----------|
| 1. FEMALE TOPS (RVLFF) | add 2.55 |
| 1. BARB TOP (RVB) | add .60 |
| 2. VITON GASKET (RVM44GV) | add 1.15 |
| 4. NYLON BOWL (RVM44BN) | add .80 |

**MINI STRAINER OPTION(LONG BOWL & SCREEN)

- | | |
|---|----------|
| 20,40,80 mesh screen w/nylon bowl | add 3.45 |
| 20,40,80 mesh screen w/clear nylon bowl | add 6.50 |

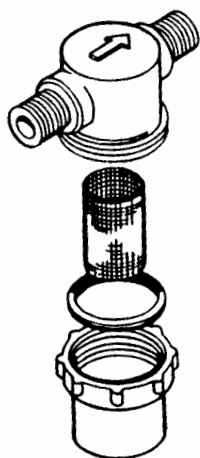
HOW TO ORDER

1. TOP	MPT(RVM) 1/4(44)	FPT(RVLF) 3/8(66)	HB(RVB) 1/2(88)
	POLY(P) NYLON(N)		
2. GASKET	EPDM(E)	VITON(V)	BUNA(B)
3. SCREEN	20M(20)	40M(40)	80M(80)
4. BOWL	POLY(P)	NYLON(N)	CLEAR(C)

EXAMPLE: RVM 44 P E 40 P

*FOR MINI OPTION ADD A 5 TO SIZE EX. RVM445

LOW PROFILE & MINI STR PARTS

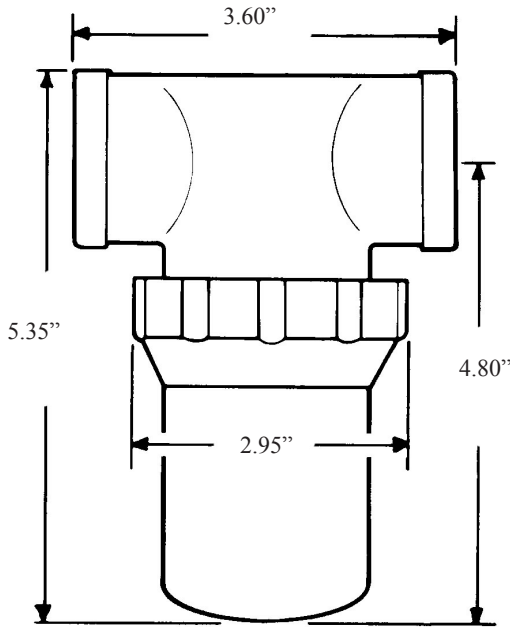


COMPONENT(1)	SIZE/PORT	NYLON #	LIST/EA	POLYPRO #	LIST/EA	
TOP	1/8" MPT	RVM22TN	3.84	RVM22TP	3.84	
TOP	1/4" MPT	RVM44TN	3.84	RVM44TP	3.84	
TOP	3/8" MPT	RVM66TN	3.84	RVM66TP	3.84	
TOP	1/2" MPT	RVM88TN	3.84	RVM88TP	3.84	
TOP	1/4" HB	RVB44TN	4.45	RVB44TP	4.45	
TOP	3/8" HB	RVB66TN	4.45	RVB66TP	4.45	
TOP	1/2" HB	RVB88TN	4.45	RVB88TP	4.45	
TOP	1/8" FPT	RVLF22TN	6.54	RVLF22TP	4.94	
TOP	1/4" FPT	RVLF44TN	6.54	RVLF44TP	4.94	
TOP	3/8" FPT	RVLF66TN	6.54	RVLF66TP	4.94	
TOP	1/2" FPT	RVLF88TN	6.54	RVLF88TP	4.94	
COMPONENT(2)	MATERIAL	TEMP MIN	COLOR	PART #	LIST/EA	
GASKET	BUNA	0 F	BLACK	RVM44GB	.46	
GASKET	EPDM	-40 F	RED	RVM44GE	.46	
GASKET	VITON	10 F	GREEN	RVM44GV	1.68	
COMPONENT(3)	MATERIAL	MESH*	MICRON+	ID" x L"	PART #	LIST/EA
SCREEN	ST STEEL	20	915	.94 x 1.34	RVM4420	1.91
SCREEN	ST STEEL	40	480	"	RVM4440	1.91
SCREEN	ST STEEL	80	178	"	RVM4480	1.91
SCREEN	ST STEEL	100	80	"	RVM44100	4.94
SCREEN	ST STEEL	250	40	"	RVM44250	14.80
SCREEN	POLYETH		70		RVM4490PE	3.40
SCREEN(MINI)	ST STEEL	20	915	.94 x 2.63	RVM44520	2.17
SCREEN(MINI)	ST STEEL	40	480	"	RVM44540	2.17
SCREEN(MINI)	ST STEEL	80	178	"	RVM44580	2.17
COMPONENT (4)	MATERIAL	L.P. #	LIST/EA	MINI #(Long)	LIST/EA	
BOWL	NYLON	RVM44BN	4.62	RVM445BN	7.32	
BOWL	POLYPRO	RVM44BP	3.82	RVM445BP	6.95	
BOWL	CLEAR NYLON	RVM44BC	3.82	RVM445BC	10.93	

*Mesh is defined as the number of wires per linear inch measured from center of wire to center of wire.

+Micron is defined as one thousandth of a millimeter.

INTERMEDIATE STRAINER



FILTER AREA - 17.33 SQ IN

POLYPRO (Standard Assembly) List/EA

1. POLY TOP (RVF) **\$ 13.90**
2. EPDM OR BUNA GASKET(RVF66GB OR E)
3. 20 OR 40 MESH SCREEN(RVF66_)
4. POLY BOWL(RVF66BP)

OPTIONS

1. TAB TOP (RVT) add .80
2. VITON GASKET (RVF66GV) add 2.85
3. 80 MESH SCREEN (RVF6680S) add .65
3. CAGED SCREEN(RVF66_C) add 2.40
3. 100 MESH SCREEN (RVF66100) add 5.10
3. 250 MESH SCREEN (RVF66250) add 20.40
3. CAGED POLY SCREEN (RVF66_P) add 4.85
4. CLEAR NYLON BOWL (RVF66BC) add 7.25

NYLON (Standard Assembly) List/EA

1. NYLON TOP (RVF) **\$ 19.60**
2. EPDM OR BUNA GASKET(RVF66GB OR E)
3. 20 OR 40 MESH SCREEN(RVF66_)
4. NYLON BOWL (RVF66BN)

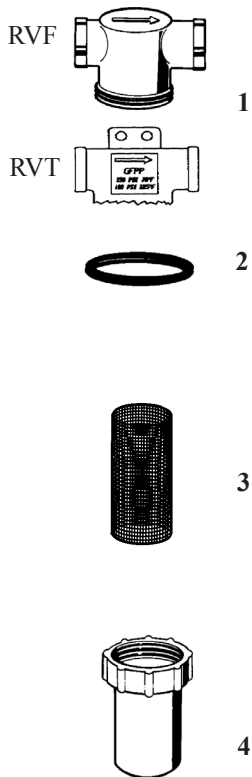
OPTIONS

2. VITON GASKET (RVF66GV) add 2.85
3. 80 MESH SCREEN (RVF6680S) add .60
3. CAGED SCREEN (RVF66_C) add 2.35
3. 100 MESH SCREEN (RVF66100) add 5.05
3. 250 MESH SCREEN (RVF66250) add 20.40
4. CLEAR NYLON BOWL (RVF66BC) add 5.25

HOW TO ORDER

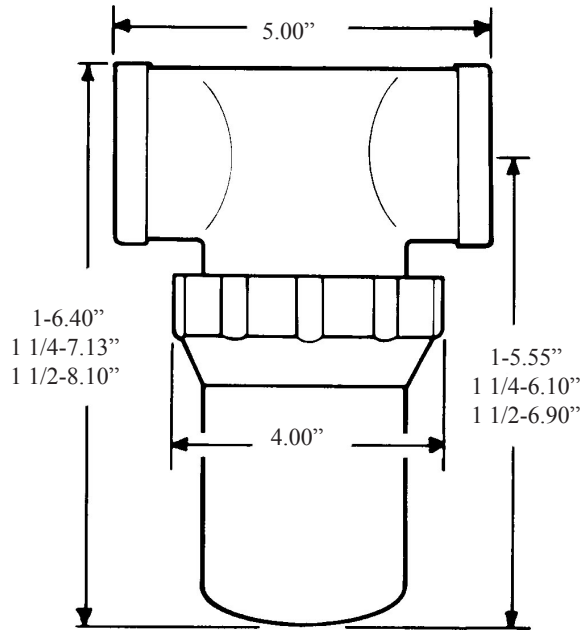
1. TOP	FPT(RVF) 3/8"(66)	TAB(RVT-POLY ONLY) 1/2"(88)	3/4"(1212)
	POLY(P)	NYLON(N)	
2. GASKET	EPDM(E)	VITON(V)	BUNA(B)
3. SCREEN	20M(20)	40M(40)	80M(80)
4. BOWL	POLY(P)	NYLON(N)	CLEAR(C)

INTERMEDIATE STRAINER PARTS



COMPONENT(1)	SIZE/PORT	NYLON #	PRICE	POLYPRO #	LIST/EA	
TOP	3/8" FPT	RVF66TN	9.54	RVF66TPN	5.40	
TOP	1/2" FPT	RVF88TN	9.54	RVF88TPN	5.40	
TOP	3/4" FPT	RVF1212TN	9.54	RVF1212TPN	5.40	
TOP	1" FPT	RVF1616TN*	9.54	RVF1616TP*	5.40	
TOP	3/8" FPT TAB			RVT66TP	6.25	
TOP	1/2" FPT TAB			RVT88TP	6.25	
TOP	3/4" FPT TAB			RVT1212TP	6.25	
COMPONENT(2)	MATERIAL	TEMP MIN	COLOR	PART #	LIST/EA	
GASKET	BUNA	0 F	BLACK	RVF66GB	.46	
GASKET	EPDM	-40 F	RED	RVF66GE	.46	
GASKET	VITON	10 F	GREEN	RVF66GV	3.50	
COMPONENT(3)	MATERIAL	MESH*	MICRON+	ID" x L"	PART #	LIST/EA
SCREEN	ST STEEL	20	915	1.49 x 3.75	RVF6620S	3.20
SCREEN	ST STEEL	40	480	"	RVF6640S	3.20
SCREEN	ST STEEL	80	178	"	RVF6680S	3.87
SCREEN	ST STEEL	100	80	"	RVF66100	8.68
SCREEN	ST STEEL	250	40	"	RVF66250	25.15
SCREEN	POLYETHYLENE		70	1.00 x 3.52	RVF6690PE	6.29
SCREEN	CAGED ST	20	915	1.49 x 3.75	RVF6620C	5.78
SCREEN	CAGED ST	40	480	"	RVF6640C	5.78
SCREEN	CAGED ST	80	178	"	RVF6680C	5.78
SCREEN	CAGED POLY	20	915	"	RVF6620P	8.40
SCREEN	CAGED POLY	40	480	"	RVF6640P	8.40
*Mesh is defined as the number of wires per linear inch measured from center of wire to center of wire.						
+Micron is defined as one thousandth of a millimeter						
COMPONENT(4)	MATERIAL	COLOR	PART #	LIST/EA		
BOWL	NYLON	WHITE	RVF66BN	8.09		
BOWL	POLYPRO	BLACK	RVF66BP	5.80		
BOWL	CLEAR NYLON	CLEAR	RVF66BC	13.95		

LARGE STRAINER



FILTER AREA:

1" - 29.73 SQ IN
 1 1/4" - 31.84 SQ IN
 1 1/2" - 38.27 SQ IN

POLYPRO (Standard Assembly) List/EA

1. POLY TOP (ANY SIZE) **\$ 28.30**
2. EPDM OR BUNA GASKET(RVF1616GB OR E)
3. 20 OR 40 MESH SCREEN(ANY SIZE)
4. POLY BOWL(RVF1616BP)

OPTIONS

2. VITON GASKET (RVF1616GV) add 3.65
3. 80 MESH SCREEN (ANY SIZE) add 3.40
4. CLEAR NYLON BOWL (RVF1616BC) add 13.80

NYLON (Standard Assembly) List/EA

1. NYLON TOP (ANY SIZE) **\$ 39.65**
2. EPDM OR BUNA GASKET(RVF1616GB OR E)
3. 20 OR 40 MESH SCREEN(ANY SIZE)
4. NYLON BOWL(RVF1616BN)

OPTIONS

2. VITON GASKET (RVF1616GV) add 3.65
3. 80 MESH SCREEN (ANY SIZE) add 3.40
4. CLEAR NYLON BOWL (RVF1616BC) add 7.55

HOW TO ORDER

1. TOP
 FPT=RVF
 1=1616 1 1/4=2020 1 1/2=2424
 POLY=P NYLON=N
- 2.GASKET EPDM=E VITON=V BUNA=B
- 3.SCREEN 20M=20 40M=40 80M=80
- 4.BOWL POLY=P NYLON=N CLEAR=C

EXAMPLE: RVF 1616 N V 40 N

PLEASE NOTE: ALL LARGE STRAINERS
 USE THE SAME GASKET & BOWL

LARGE STRAINERS

LARGE STRAINER PARTS							
COMPONENT(1)	SIZE/PORT	NYLON #	PRICE	POLYPRO #	LIST/EA		
1	TOP	1" FPT	RVF1616TN	20.29	RVF1616TP	14.85	
	TOP	1 1/4" FPT	RVF2020TN	20.29	RVF2020TP	14.85	
	TOP	1 1/2" FPT	RVF2424TN	20.29	RVF2424TP	14.85	
COMPONENT(2)	MATERIAL	TEMP MIN	COLOR	PART #	LIST/EA		
2	GASKET	BUNA	0 F	BLACK	RVF1616GB	.90	
	GASKET	EPDM	-40 F	RED	RVF1616GE	.90	
	GASKET	VITON	10 F	GREEN	RVF1616GV	4.80	
COMPONENT(3)	MATERIAL	MESH*	MICRON+	ID" x L"	PART #	LIST/EA	
3	SCREEN-1"	ST STEEL	20	915	2.24 x 4.24	RVF161620	4.94
	SCREEN-1"	ST STEEL	40	480	"	RVF161640	4.94
	SCREEN-1"	ST STEEL	80	178	"	RVF161680	8.59
	SCREEN-1 1/4"	ST STEEL	20	915	2.24 x 4.54	RVF202020	4.94
	SCREEN-1 1/4"	ST STEEL	40	480	"	RVF202040	4.94
	SCREEN-1 1/4"	ST STEEL	80	178	"	RVF202080	8.59
	SCREEN-1 1/2"	ST STEEL	20	915	2.24 x 5.45	RVF242420	4.94
	SCREEN-1 1/2"	ST STEEL	40	480	"	RVF242440	4.94
	SCREEN-1 1/2"	ST STEEL	80	178	"	RVF242480	8.59
*Mesh is defined as the number of wires per linear inch measured from center of wire to center of wire. +Micron is defined as one thousandth of a millimeter							
COMPONENT(4)	MATERIAL	COLOR	PART #	LIST/EA			
4	BOWL	NYLON	WHITE	RVF1616BN	16.50		
	BOWL	POLYPRO	BLACK	RVF1616BP	9.55		
	BOWL	CLEAR NYLON	CLEAR	RVF1616BC	24.75		

MATERIAL	POLYPROPYLENE 20% GF	6/6 NYLON	NYLON
COLOR	BLACK	WHITE	TRANSPARENT
PRESSURE	150 PSI@70 F	150 PSI@70 F	150 PSI@70 F
RATING	100 PSI@125 F	100 PSI@125 F	100 PSI@125 F

*Please call with specific chemical compatibility questions.