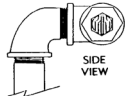
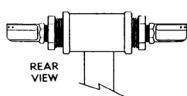


**BOOMBUSTER
BOOMLESS NOZZLES**

- Machined from Stainless Steel
- Industrial Grade Nylon Diffusers
- Extra Wide Spray Pattern
- Spray chemicals and fertilizers.
- Standard pipe threads



ADD "R" TO END OF PART NUMBER FOR ROADSIDE NOZZLE.

Part#	List/E
BB1203	235.00
BB1205	235.00
BB125	235.00
BB140	245.00
BB1806	260.00
BB18010	260.00
BB187	260.00
BB26011	290.00
BB265	290.00
BB375	300.00
BB437	325.00
BB500	370.00
BB504	370.00

PART #	ANGLE	PSI	GPM	DIST.	4 MPH	5	7	10	12
BB1203	Down	30	1.7	3	70	56	40	28	23
1/4 MPT	Down	40	2.0	3	83	66	47	33	27
	Down	50	2.2	3	91	73	52	36	30
BB1205	Down	30	1.7	5	42	34	24	17	14
1/4 MPT	Down	40	2.0	5	50	40	28	20	17
	Down	50	2.0	5	54	44	31	22	18
BB125	Level	20	1.5	14	13.3	10.6	7.6		
1/4 MPT	Level	30	1.7	15.5	13	11	7.8		
		40	2.0	15.5	16	13	9.1		
BB140	Level	30	2.0	16.5	15	12	8.5	6	5
3/8 MPT	Level	40	2.4	16.5	18	14	10	7	6
	Level	50	2.7	16.5	20	16	12	8	6.8
BB1806	Down	30	3.6	6	74	59	42	30	25
3/8 MPT	Down	40	4.3	6	89	71	51	35	30
	Down	50	4.8	6	100	79	57	40	33
BB18010	Down	30	3.6	10	45	36	25	18	15
3/8 MPT	Down	40	4.3	10	53	43	30	21	18
	Down	50	4.8	10	59	48	34	24	20
BB187	Level	30	3.6	18.5	24	19	14	9.6	8
3/8 MPT	Level	40	4.3	18.5	29	23	16	12	9.6
	Level	50	4.8	18.5	32	26	18	13	11
BB265	Level	30	6.8	19.5	43	35	25	17	14
1/2 MPT	Level	40	8.0	19.5	51	41	29	20	17
	Level	50	8.8	19.5	56	45	32	22	19
BB375	Level	30	14.4	21.5	83	66	47	33	28
3/4 MPT	Level	40	16.7	21.5	96	77	55	38	32
	Level	50	18.8	21.5	108	87	62	43	36
BB437	Up	30	18.5	29.5	78	62	44	31	26
3/4 MPT	Up	40	21.5	29.5	90	72	52	36	30
	Up	50	24.2	29.5	102	81	58	41	34
BB500	Level	30	29	20	179	142	102	72	60
1 MPT	Level	40	33	20	204	164	116	82	68
	Level	50	37	20	229	182	130	91	76
BB504	Up	30	29	41	90	72	51	36	30
1 MPT	Up	40	33	41	102	82	58	41	34
	Up	50	37	41	114	91	65	46	38

**BOOMINATOR
BOOMLESS NOZZLES**



- Machined from Stainless Steel
- Superior fluid pattern and dist.
- Heavy droplet pattern for minimal drift
- Short, Regular, or Full Pattern
- All nozzles factory tested

Part#	Mpt	Pattern	List/E
BI1250 L or R	1/4	Regular	226.00
BI1400 L or R	1/4	Regular	247.00
BI1870 L or R	1/4	Regular	267.00
BI1253 L or R	1/4	Short	226.00
BI1255 L or R	1/4	Short	226.00
BI1404 L or R	1/4	Short	247.00
BI1406 L or R	1/4	Short	247.00
BI1876 L or R	1/4	Short	267.00
BI1871 L or R	1/4	Short	267.00
BI1250FS	1/4	Full	278.00
BI1400FS	1/4	Full	298.00
BI1400FM	1/4	Full	298.00
BI1870FS	1/4	Full	319.00
BI1870FM	1/4	Full	319.00
BI1870FL	1/4	Full	319.00
BI2650 L or R	1/2	Regular	319.00
BI3750 L or R	1/2	Regular	336.00

PART #	PSI	GPM	DIST.	4 MPH	5	7	10	12
BI1250	20	1.5	16	12	9	7		
LEFT &	30	1.7	16	13	11	8		
RIGHT	40	2.0	16	16	12	9		
BI1400	20	1.7	17	12	10	7	5	4
LEFT &	30	2.0	17	15	12	8	6	4.5
RIGHT	40	2.5	17	18	15	10	7	6
BI1870	20	3.0	18	21	17	12	8	7
LEFT &	30	3.5	18	24	19	14	10	8
RIGHT	40	4.3	18	30	24	17	12	10
BI1253	20	1.5	3	62	50	35	25	21
LEFT &	30	1.7	3	70	56	40	28	23
RIGHT	40	2.0	3	83	66	47	33	28
BI1255	20	1.5	5	37	30	21	15	12
LEFT &	30	1.7	5	42	34	24	17	14
RIGHT	40	2.0	5	50	40	28	20	17
BI1404	20	1.7	4	53	42	30	21	18
LEFT &	30	2.0	4	62	50	35	25	21
RIGHT	40	2.5	4	77	62	44	31	26
BI1406	20	1.7	6	35	28	20	14	12
LEFT &	30	2.0	6	41	33	24	17	14
RIGHT	40	2.5	6	52	41	30	21	17
BI1876	20	3.0	6	62	50	35	25	21
LEFT &	30	3.5	6	72	58	41	29	24
RIGHT	40	4.3	6	89	71	51	35	30
BI1871	20	3.0	10	37	30	21	15	13
LEFT &	30	3.5	10	43	35	25	17	15
RIGHT	40	4.3	10	53	43	30	21	18
BI1250FS	20	1.5	16	12	8	6.5		
	30	1.7	16	13	11	8		
	40	2.0	16	16	12	9		
BI1400FS	20	1.7	17	12	10	7	5	4
	30	2.0	17	15	12	8	6	4.5
	40	2.5	17	18	15	10	7	6
BI1400FM	20	1.7	22	10	8	5.5	4	3
	30	2.0	22	11	9	6	4.5	3.5
	40	2.5	22	14	11	8	5.5	4.5
BI1870FS	20	3.0	18	21	17	12	8	7
	30	3.5	18	24	19	14	10	8
	40	4.3	18	30	24	17	12	10
BI1870FM	20	3.0	23	16	13	9	6.5	5
	30	3.5	23	19	15	11	7.5	6
	40	4.3	23	23	19	13	9	7.5
BI1870FL	20	3.0	30	12	10	7	5	4
	30	3.5	30	14	12	8	5.5	4.5
	40	4.3	30	18	14	10	7	6

Other Nozzles Available - Please Call

BOOMLESS
NOZZLES